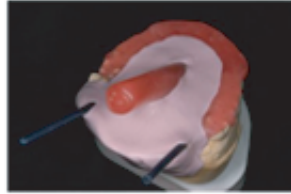


1



2



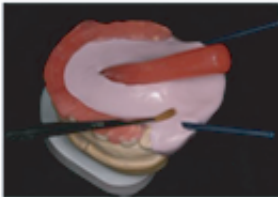
5



6



3



4



7



8



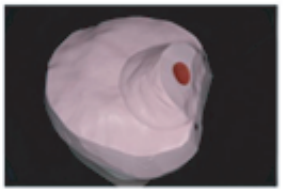
ワックス分離剤(GCセップ)の塗布

ワックス分離剤(GCセップ)の塗布

9



10



13



14



レジン分離剤の塗布

11



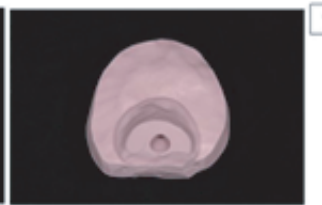
12



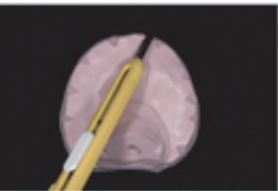
15



16



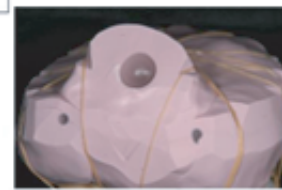
17



18



21



22



レジンの表面が曇ってから圧力釜へ

パラプレス/パリオの場合は30分重合

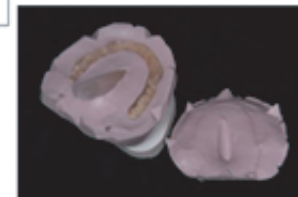
19



20



23



24

